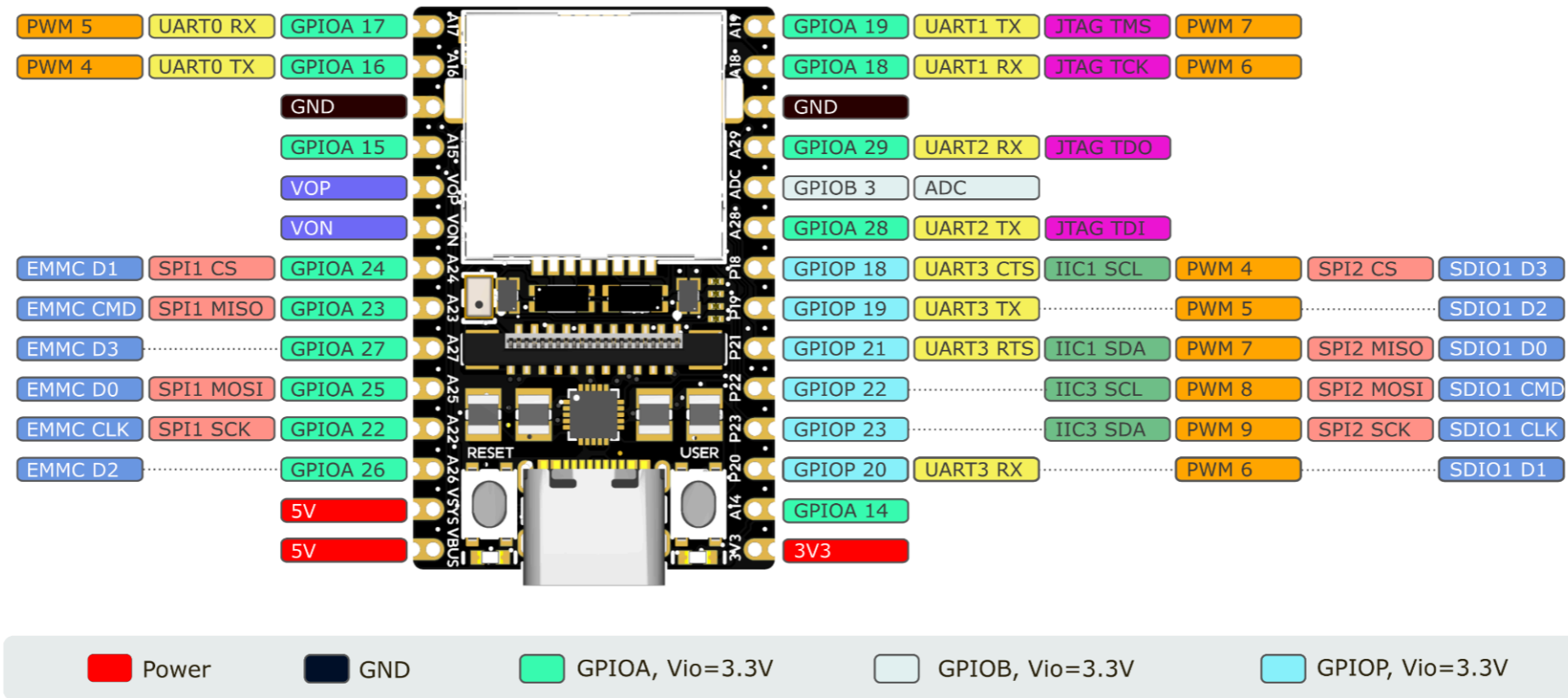
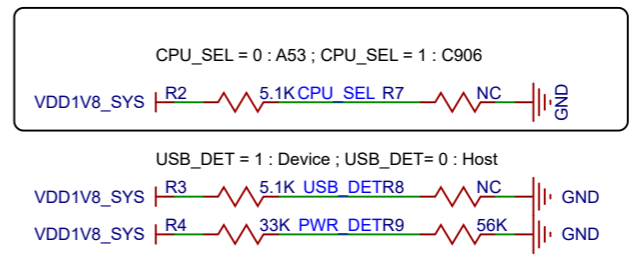
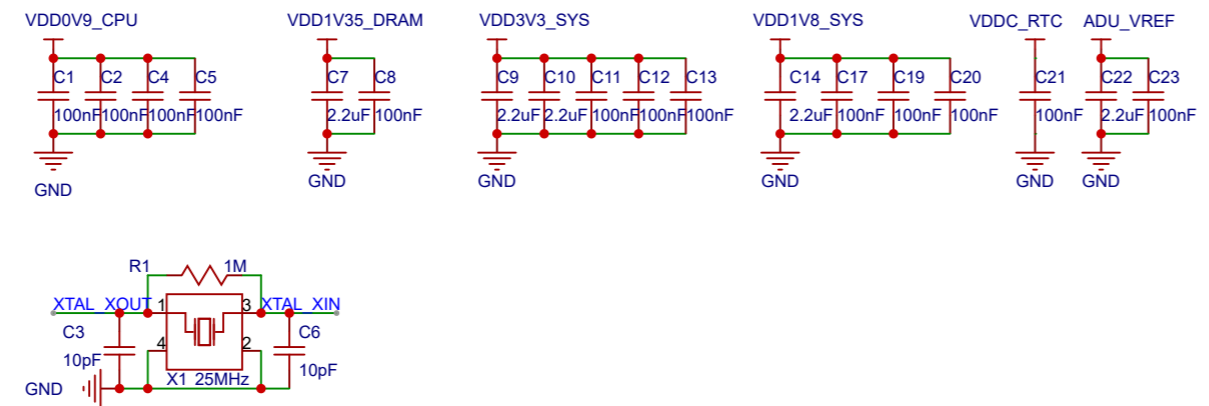
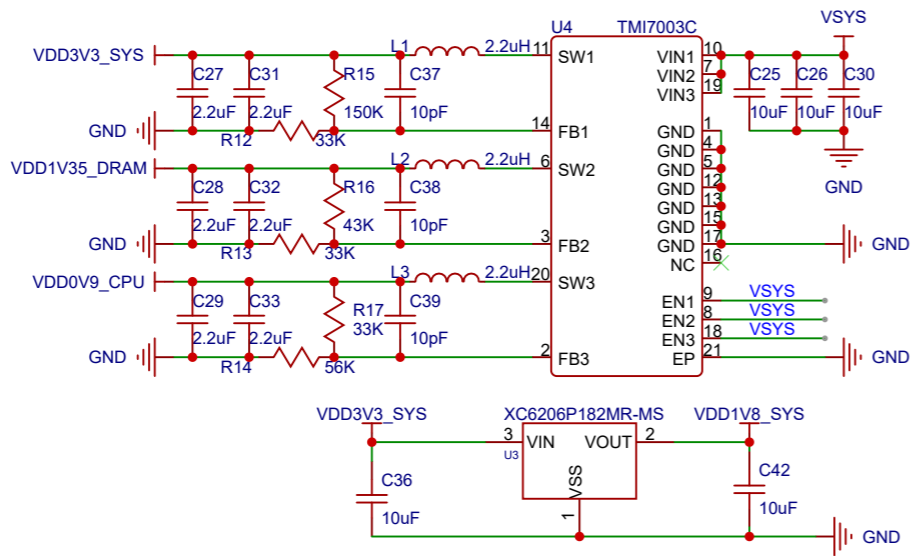


# LicheeRV Nano 70405 Pin Definition

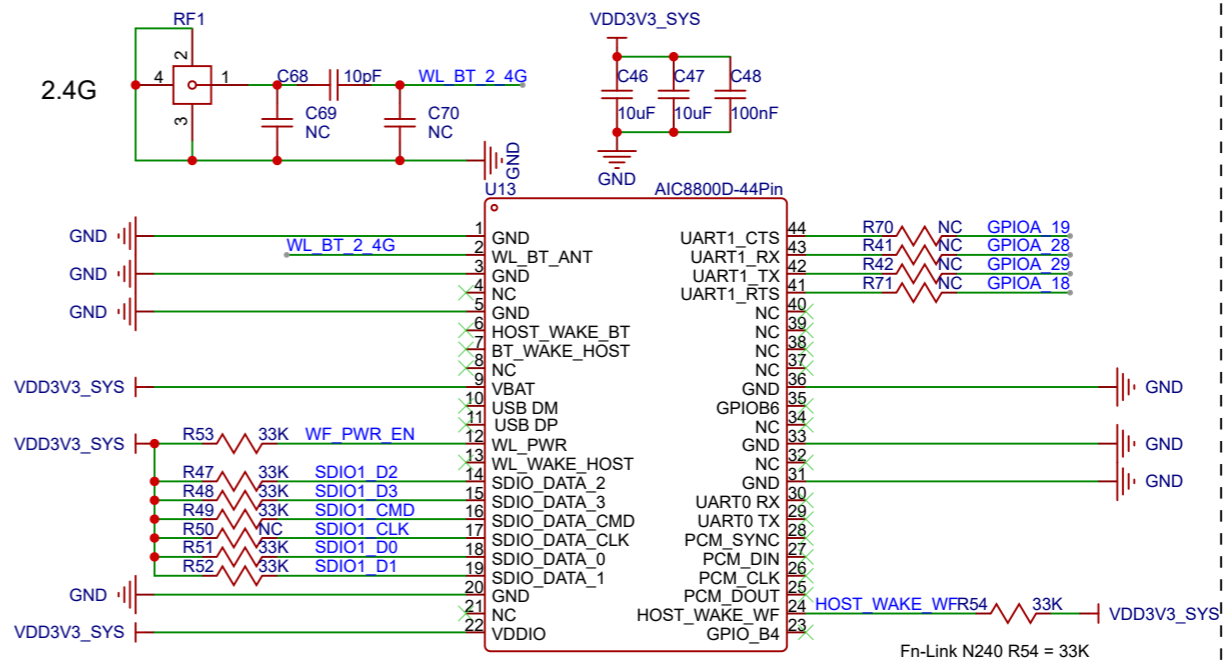




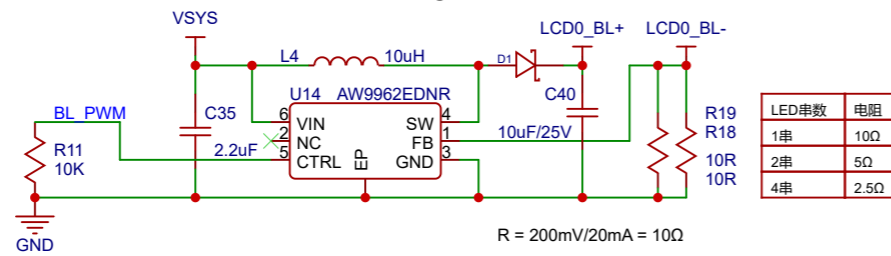
### 3CH DCDC + LDO



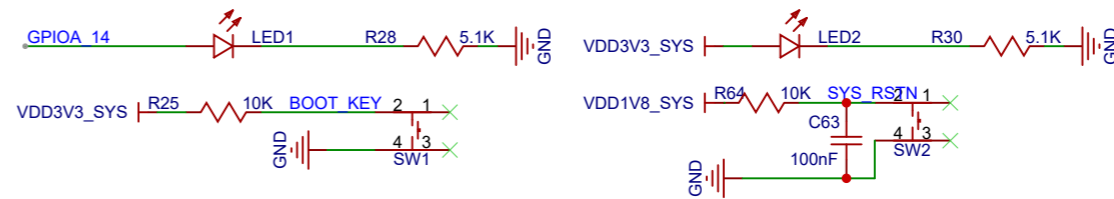
### Wi-Fi & BT



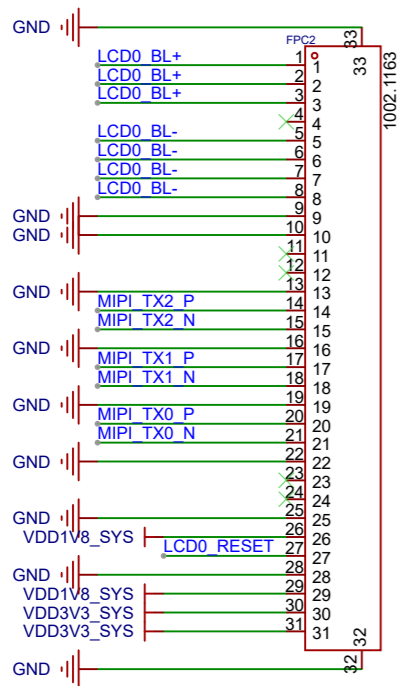
### LCD Backlight Control



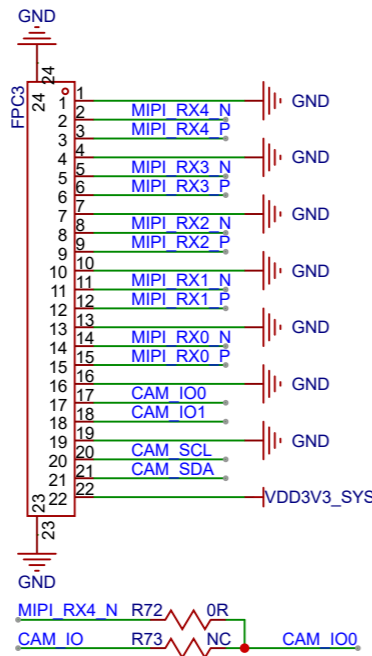
### LED & KEY / BOOT & RESET



### DSI Interface



### CSI Interface

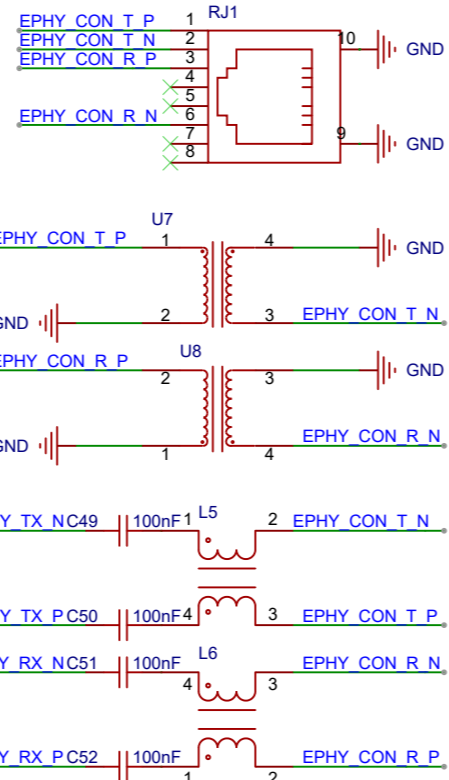


### Camera configuration description

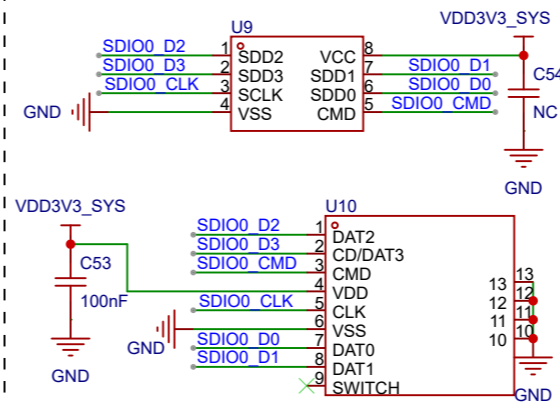
Camera + FPC	CAM_IO0	CAM_IO1
Sipeed 22Pin GC4653 + 30161 FPC	MCLK (connect to MIP14N with R72 by default)	RESET

Note: The line sequence of the closed beta version (70405) LicheeRV Nano and the production version is different, and the corresponding FPC is also different, see the wiki for details.

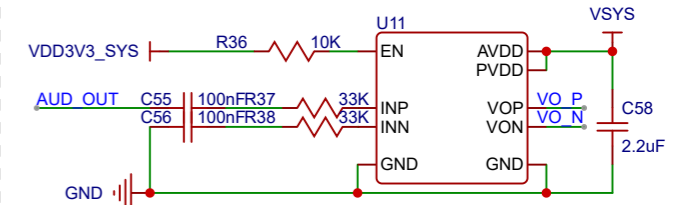
### 10/100M PHY



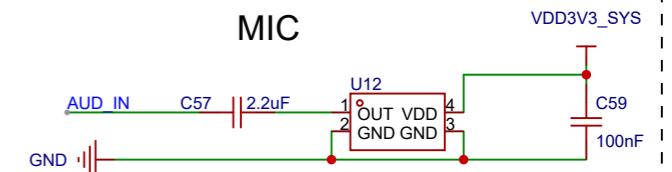
### SD NAND (PU by SOC)



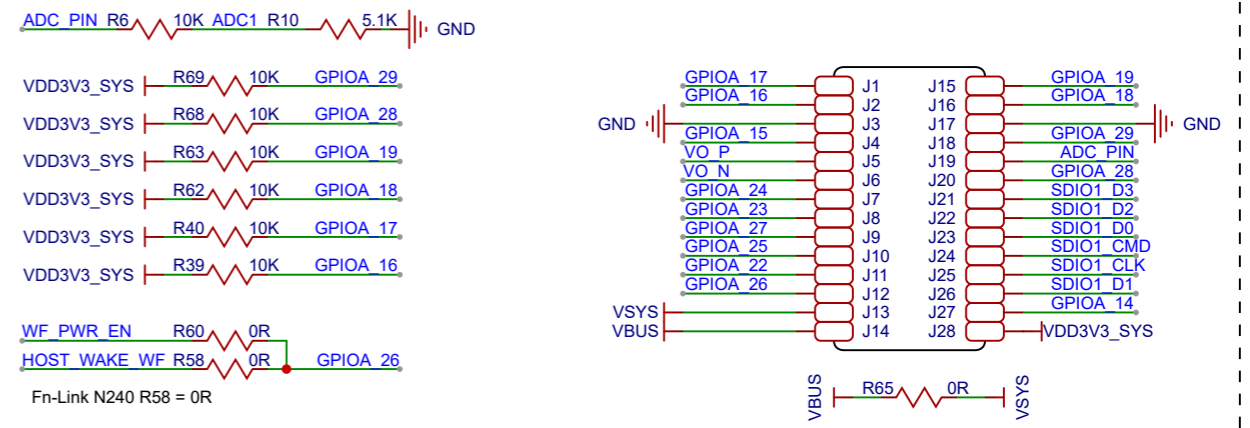
### PA



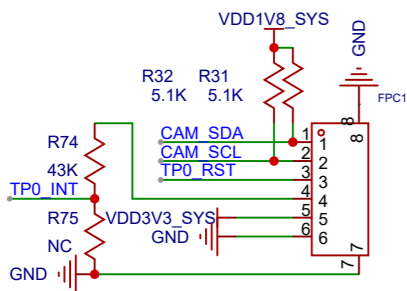
### MIC



### Pin



### Touch Interface



### USB TypeC

